

Ordering details

HD 4WRKE 3X *

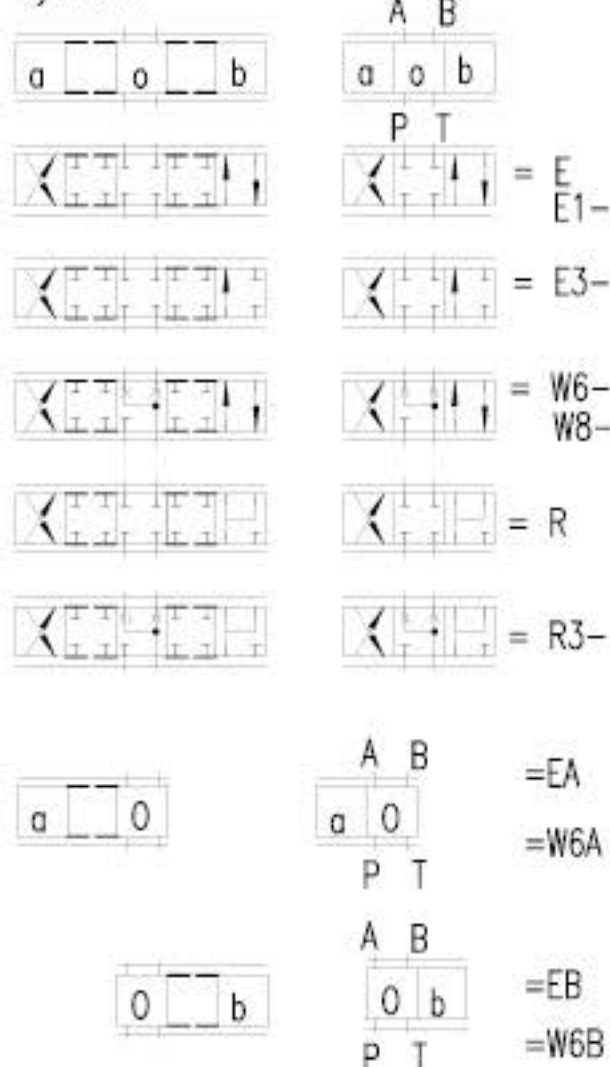
Technology of Beijing

Huade Hydraulic =HD

Electrically operated 2-stage proportional directional valve of 4-way design with integrated electronics

size 10 = 10
 size 16 = 16
 size 25 = 25
 size 32 = 32
 size 35 = 35

Symbols



With symbol E1-, W8-:

$$P \rightarrow A = q_{vmax} \quad B \rightarrow T = q_v/2$$

$$P \rightarrow B = q_v/2 \quad A \rightarrow T = q_{vmax}$$

With symbol R, R3:

$$P \rightarrow A = q_{vmax} \quad B \rightarrow T = q_v/2$$

$$P \rightarrow B = q_{vmax}/2 \quad A \rightarrow T = q_{vmax}$$

Note:

With the spools W6, W8 and R3 there is a connection from A to T and B to T in the zero position with approx. 2 % of the applicable nominal crosssection.

Further details in clear text

No code = NRB seals
 V = FKM seals

D3=With pressure reducing valve
 ZDR 6 DPO-4X/40YM
 (fixed setting)

A1=Command/actual value ± 10 V

F1=Command/actual value 4 to 20 mA

Electrical connections

With component plug

K31= Without plug-in connector

No code = Pilot oil supply external,
 Pilot oil drain external

E = Pilot oil supply internal,
 Pilot oil drain external

ET = Pilot oil supply internal,
 Pilot oil drain internal

T = Pilot oil supply external,
 Pilot oil drain internal

Supply voltage

G24 = 24 V DC

6E = Proportional solenoid with removable coil

3X = Series 30 to 39
 (30 to 39: unchanged installation and connection dimensions)

3XH = high flow (only size 25)
 Nominal flow 500L/min

Characteristic curve form

L= Linear

P= Linear with fine control range

Nominal flow in L/min at 1MPa valve pressure differential

25 =	50 =	100 =	size10
125 =	200 =		size16
220 =	350 =	500 =	size25
400 =	600 =		size32
1000 =			size35